

# 5 MAY 2011



**BUILD THE PAPER CRAFT! It's easy: cut out, fold on dotted lines, and glue in order.**

**TIKI TIP!**

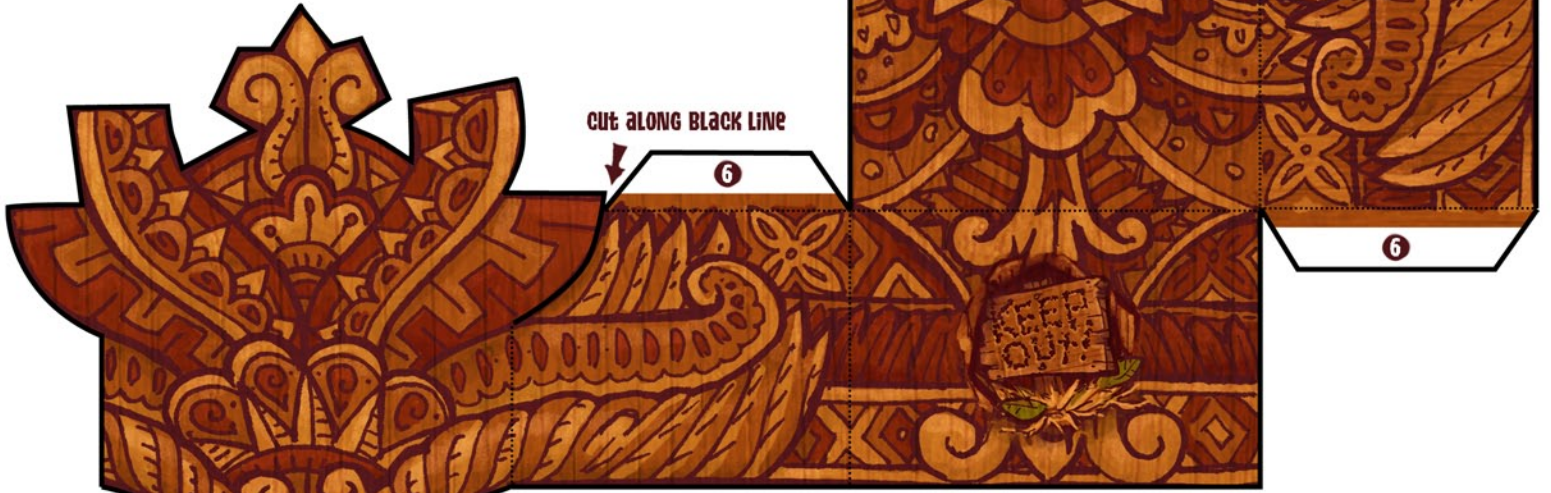
Don't need the calendar? Just turn the tiki around on his base so the limerick is facing front. Don't forget to show your friends what's lurking inside this freaky tiki's head!



**BASE**



-  **CUT**
-  **MOUNTAIN FOLD**
-  **GLUE**



**HEAD**



PRINT ON  
HEAVY PAPER  
FOR BEST  
RESULTS!



**BODY**



**CUT SLITS FOR ARMS BEFORE FOLDING**