

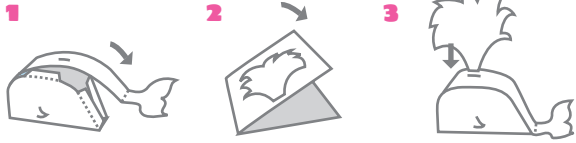
JUNE 2011



CUT FOLD GLUE



INSTRUCTIONS:



**THERE WAS A WEE WHALE
IN A BIG OL' SEA,
WHO THOUGHT, "OCEAN LIFE
JUST AIN'T FOR ME!
THE WAVES ARE SO ROUGH,
AND MERMAIDS TOO TOUGH-
A FISH BOWL'S WHERE
I SHOULD BE!"**

JUNE

S	M	T	W	T	F	S
	1	2	3	4		
5	6	7	8	9	10	11
12	13	14	15	16	17	18
19	20	21	22	23	24	25
26	27	28	29	30		

**CUT, FOLD,
GLUE & CUT
AGAIN**

**DON'T FORGET
TO CUT SLITS ON
BACK AND SIDES!**

